

How To: Change the Default Printer in SAGE

“ ☐ Purpose

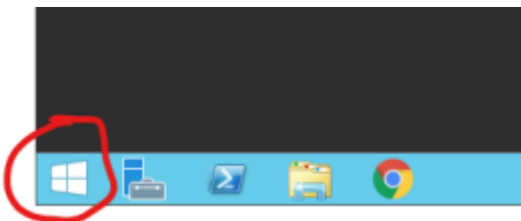
This guide walks through how to change the default printer in SAGE.

☐ Prerequisites

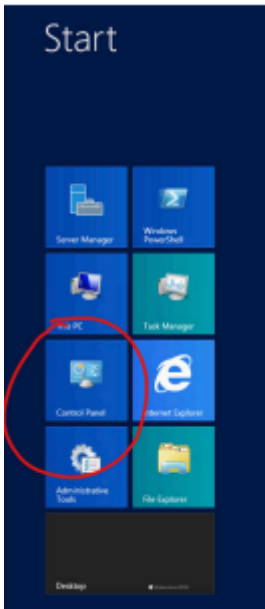
- Be connected to LETRemote

☐ Step-by-Step Instructions

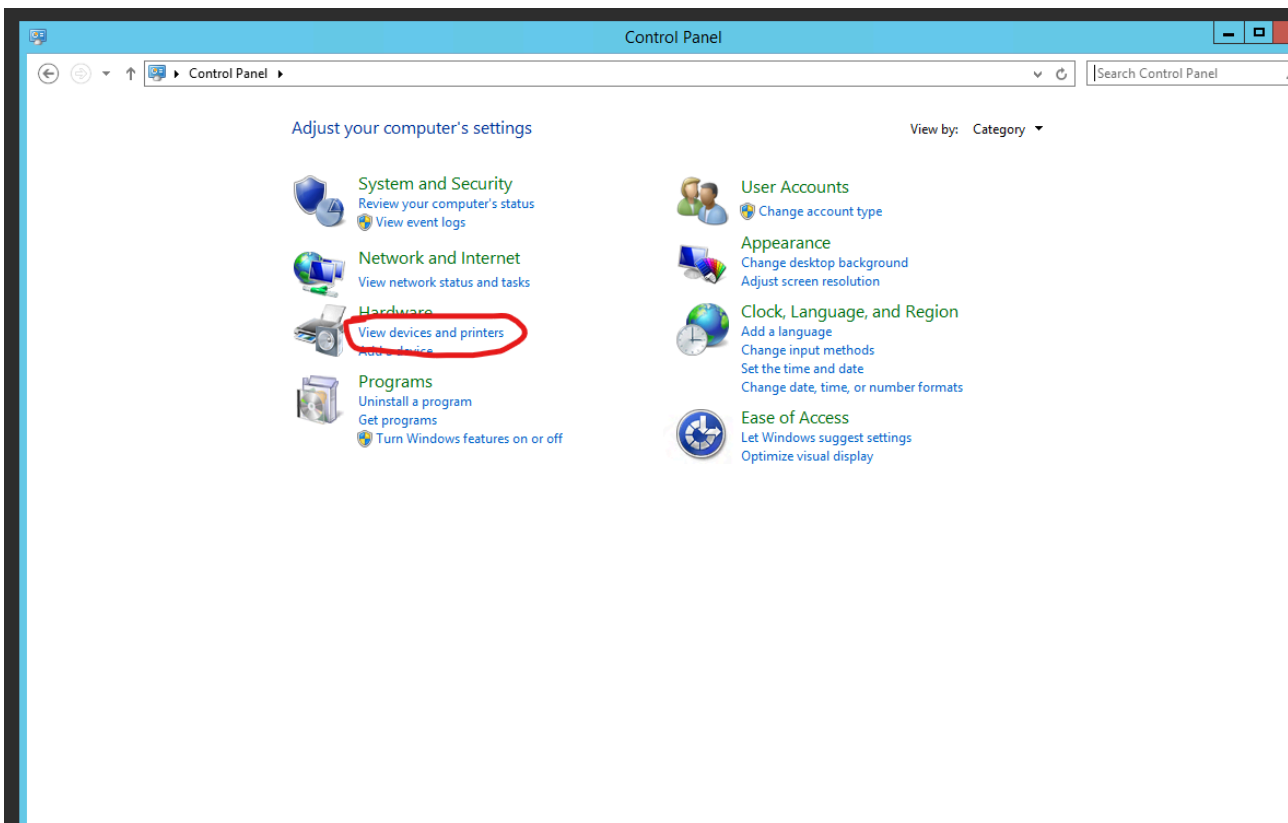
1. While in LETRemote, Click on the Windows icon in the bottom left corner



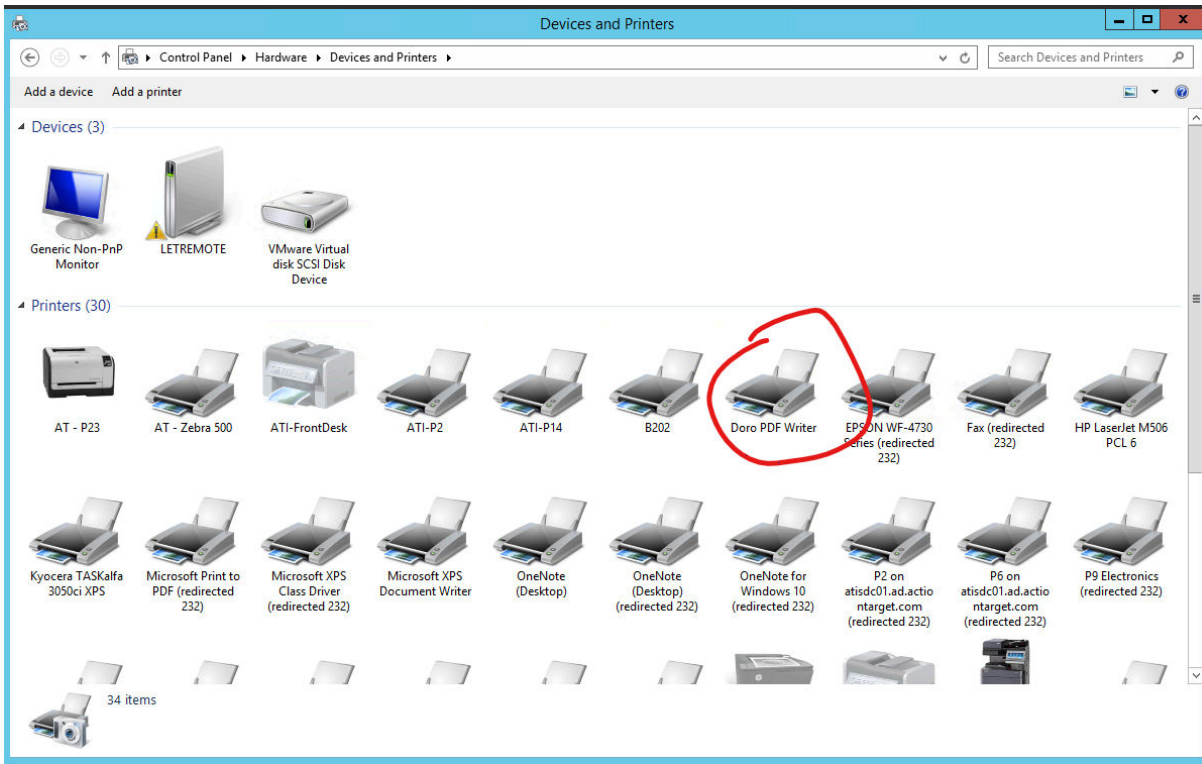
2. Click on Control Panel



3. Click on View Printers and Devices



4. Choose Doro PDF Writer as your default printer



Additional Notes & FAQ

“ Last reviewed: 2025-09-22

Author: Tanner Bench

Related Tags: How-To:

Revision #5

Created 19 August 2025 16:42:23 by Michael Losee

Updated 22 September 2025 19:08:10 by Tanner Bench