

Scrapping or Adjusting Remnant Inventory

1 Open the Action Target Enterprise Portal.

This test environment changes are related to the testing environment.

Employee Directory

Employee Name	Phone Number	Actions

Status

- Data Warehouse
- Email / Office 365
- ERP Legacy Apps
- ERP Web Apps
- Internet

Message Center

Browser Support

Preferred: Microsoft Edge

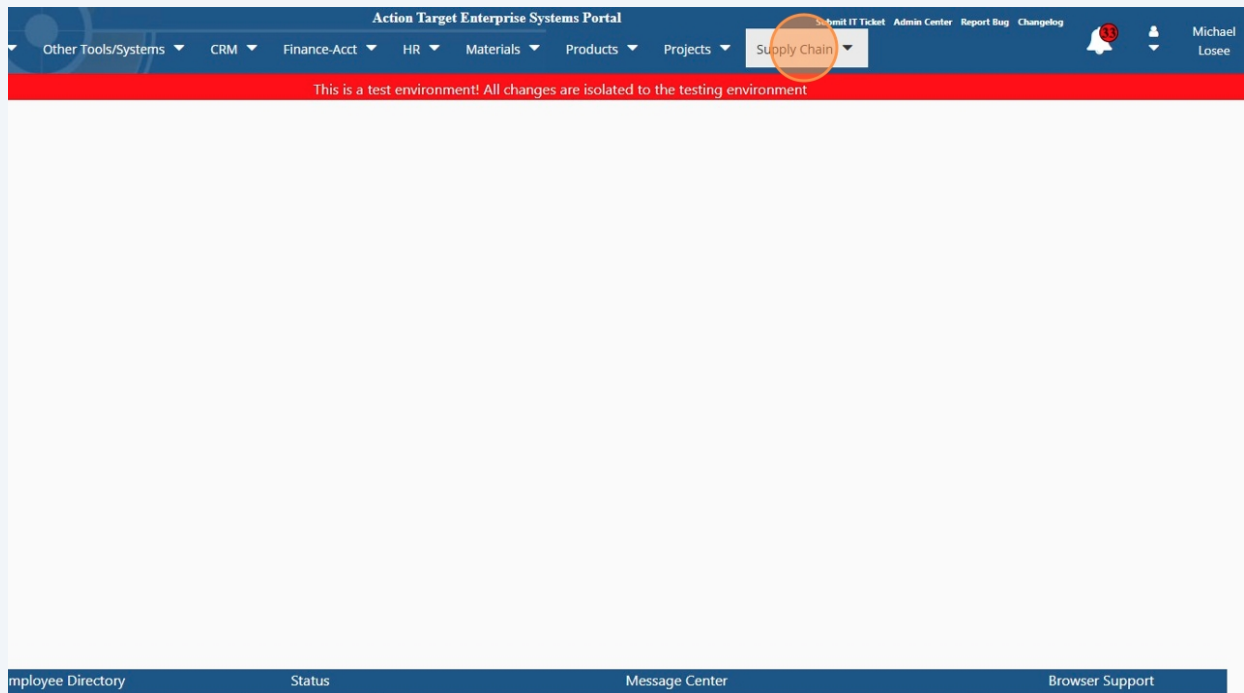
Supported: Mozilla Firefox 4+, Google Chrome

Limited: Microsoft Internet Explorer 9

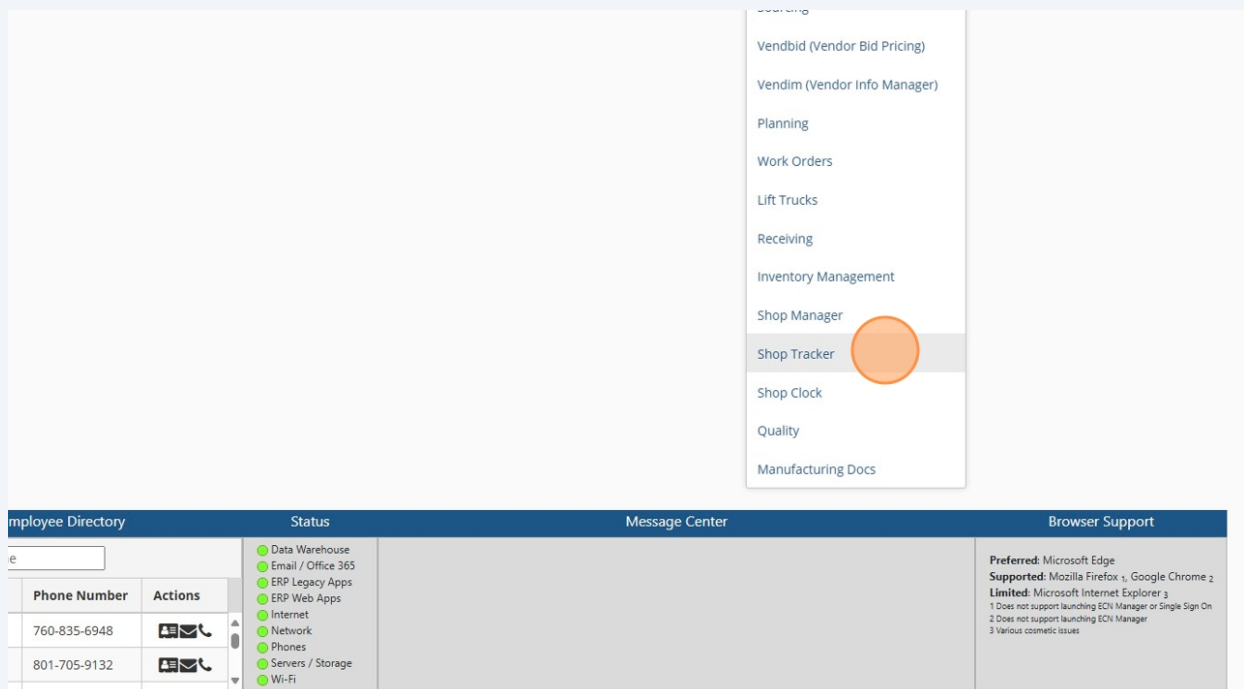
1 Does not support launching ECH Manager or Single

2 Does not support launching ECH Manager

2 Click on the "Supply Chain" menu located at the top of the portal.



3 Click on the "Shop Tracker" option from the drop down menu.



4 Click the "Material" tab located at the top of the tool.

Action Target Enterprise Systems Portal

Legacy ERP ▾ Other Tools/Systems ▾ CRM ▾ Finance-Acct ▾ HR ▾ Materials ▾ Products ▾ Projects ▾ Supply Chain ▾

Submit IT Ticket Admin Center Report Bug Characterization

This is a test environment! All changes are isolated to the testing environment

Shop Tracker

Schedule Setup Time **Material** Staging

Work Cell: pi

Schedule

Show Batches Show Logs Show Tables

Schedule Search Operator Actions

Check In Check Out Documents Fulfill EHR Labels Add Destination Close Job QC Refresh Default History Clear Selection

Search: Queued Kitting Staged In-Process Parts in Batch Work Order

Priority	WO ID	MTR	Req Qnt	Part Number	Description	Operation	WO Notes	Start	Status	Batch ID	Mat Available	Next Op Name	WO Due
5		jb-1055-1	1	49135	(Phase-Out - R	elec-assemb	Inspect Repc	2025-03-07	staged		true		
6	58793	mo-170452	4	33785	-REDLINE- Aut	elec-assemb	Indonesia 2C	2025-03-27	in-process	14637	false		2025-05-12
6	58794	mo-170454	4	33785	-REDLINE- Aut	elec-assemb	Indonesia 2C	2025-03-27	in-process	14637	false		2025-05-12
6	58695	mo-170270	15	33785	-REDLINE- Aut	elec-assemb	Indonesia 2C	2025-03-27	in-process	14636	true		2025-04-28
6	58697	mo-170276	4	33785	-REDLINE- Aut	elec-assemb	Indonesia 2C	2025-03-27	in-process	14636	false		2025-04-28
6	59693	mo-172023	1	33785	-REDLINE- Aut	elec-assemb	WAR Ord 15	2025-03-27	in-process	14637	true		2025-05-19
6	58899	mo-170628	15	33785	-REDLINE- Aut	elec-assemb	Israel-IMI 15	2025-03-27	in-process	14637	false		2025-05-16
6	58702	mo-170286	16	33785	-REDLINE- Aut	elec-assemb	Indonesia 2C	2025-03-27	in-process	14636	false		2025-05-12

5 Click on the "Remnant" button in the PandD window header.

Action Target Enterprise Systems Portal

Legacy ERP ▾ Other Tools/Systems ▾ CRM ▾ Finance-Acct ▾ HR ▾ Materials ▾ Products ▾ Projects ▾ Supply Chain ▾

Submit IT Ticket Admin Center Report Bug Characterization

This is a test environment! All changes are isolated to the testing environment

Shop Tracker

Schedule Setup Time **Material** Staging

Work Cell: pi

Select an MO in Main Tab

Check Out Remnant

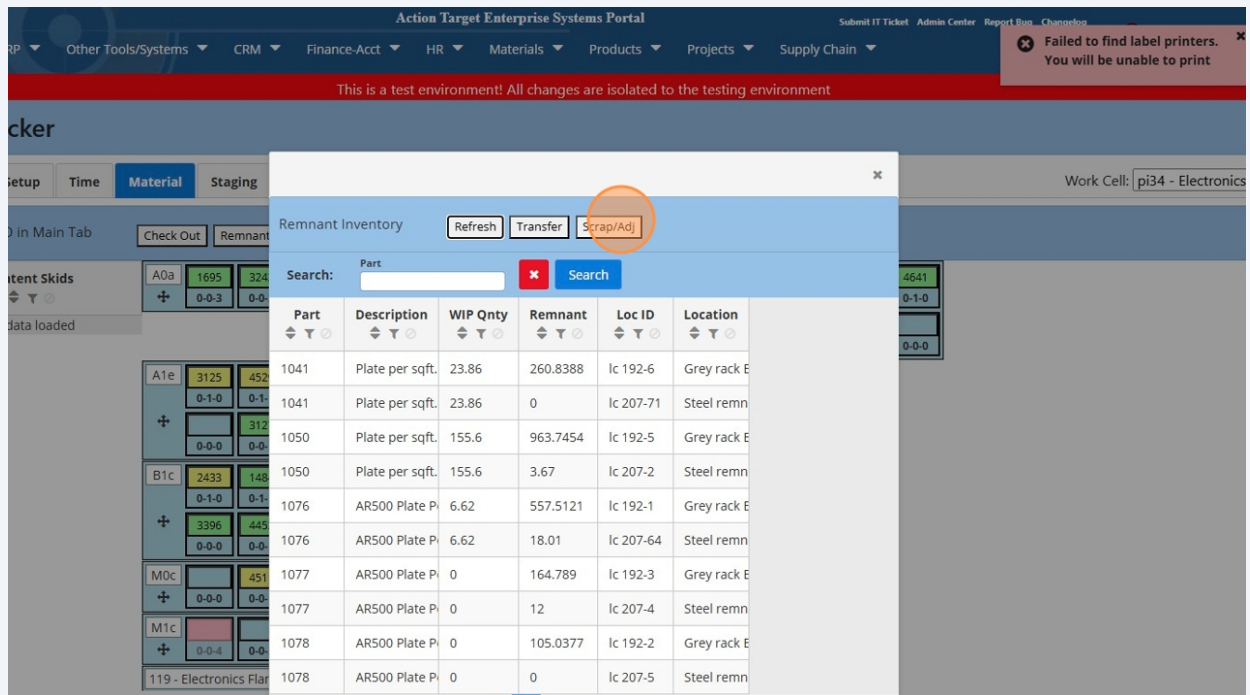
Content Skids

No data loaded

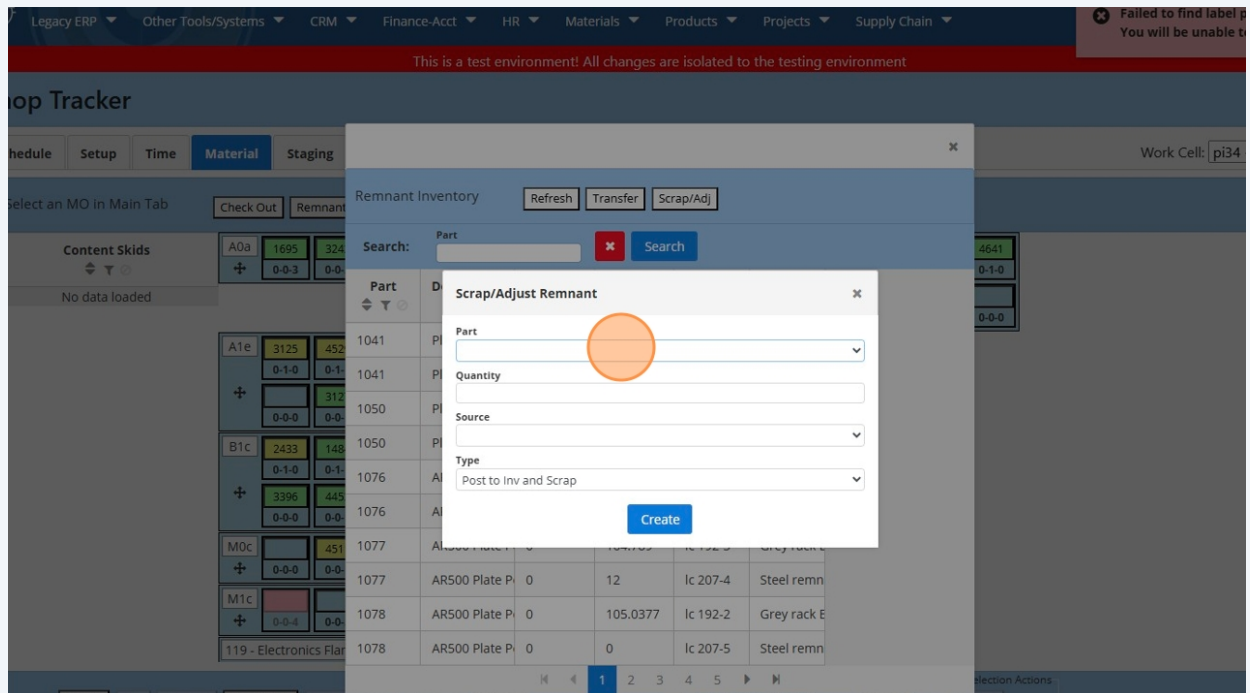
MO	Part Number	Req Qnt	Part Number	Req Qnt	Part Number	Req Qnt	Part Number	Req Qnt	Part Number	Req Qnt	Part Number	Req Qnt
A0a	1695	0-0-3	3243	0-0-2	0-0-1	0-0-0						
A0d		0-1-2	0-1-1	0-1-0								
A0f		0-0-1	0-0-0									
A0g	1557	0-1-2	4641	0-1-1	0-1-0							
	1032	0-0-2	0-0-1	0-0-0								
A1e	3125	0-1-0	4529	0-1-1	1516	0-1-2	1348	0-1-1	2023	1-1-2		
	3127	0-0-0	3936	0-0-1	4067	1-0-0	2971	1-0-1	1-0-2			
B1c	2433	0-1-0	1484	0-1-1	4620	1-1-0	3175	1-1-1	4046	1-1-2		
	3396	0-0-0	4453	0-0-1	3000	1-0-0	2923	1-0-1	1444	1-0-2		
M0c		0-0-0	4511	0-0-1	4311	0-0-2	4529	0-0-4	3125	0-0-6	0-0-7	0-0-8
M1c		0-0-4	4163	0-0-3	4163	0-0-2	4242	0-0-1	0-0-0			

119 - Electronics Flammables Cabinet

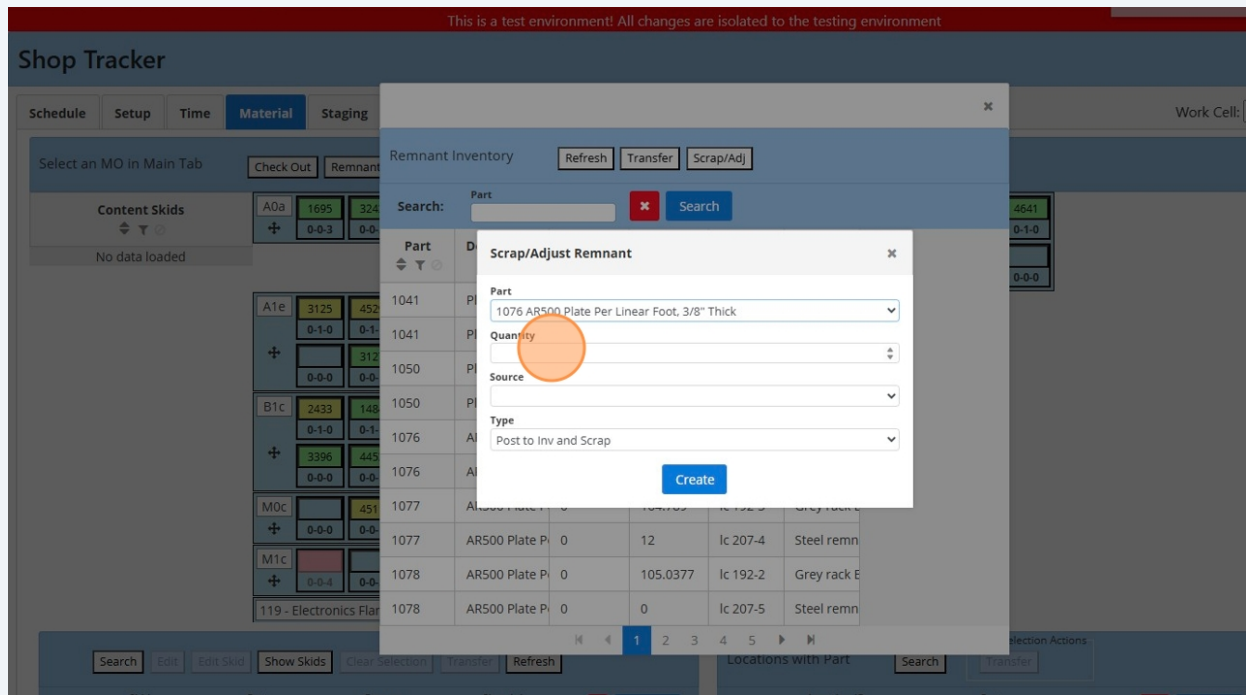
6 Click the "Scrap/Adj" button in the new window.



7 Type your desired part number into the box or use the drop-down menu.

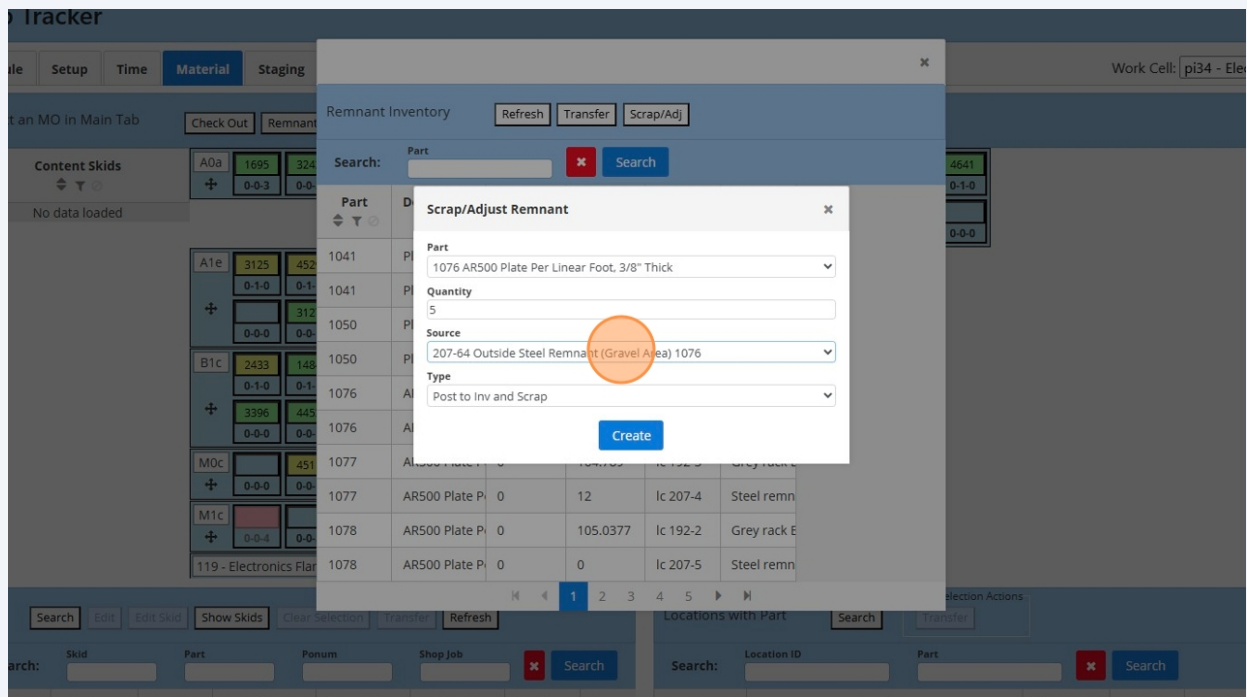


8 Input your desired quantity into the box.

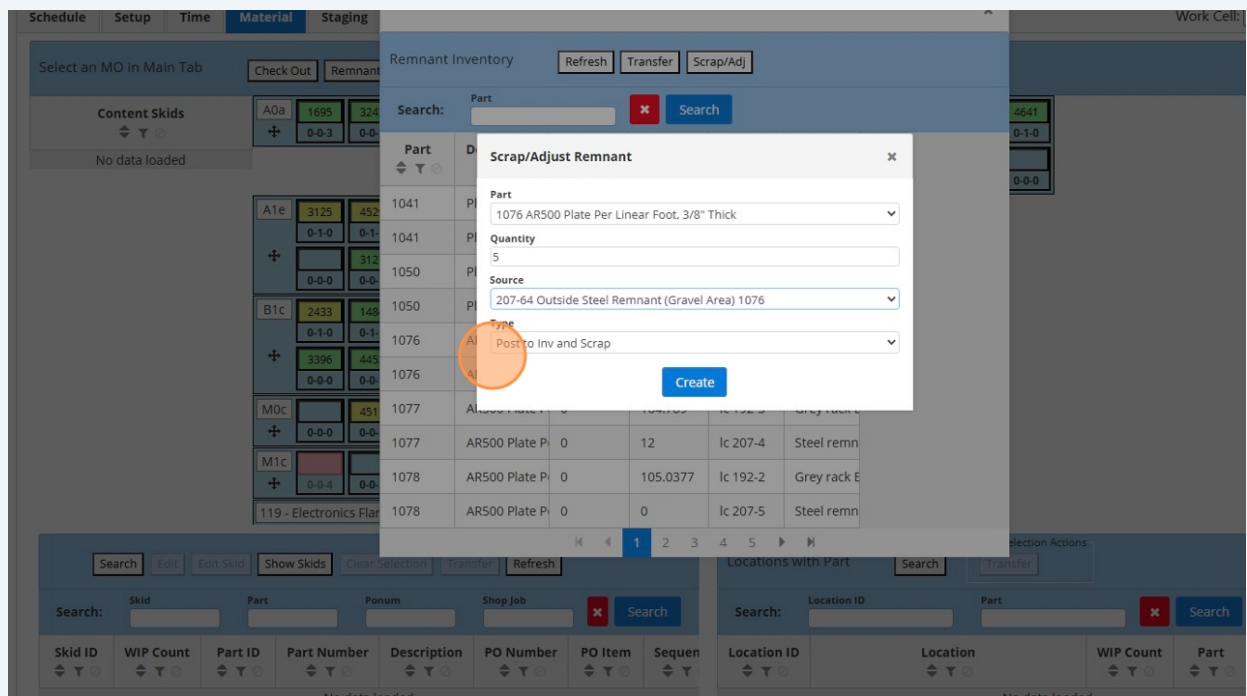


Make sure the quantity in remnant is sufficient to fulfill your desired quantity, otherwise you will receive an error.

9 Select the location where the material is coming from.



10 Choose if you would like to have the material post to inventory before scrapping, or just simply scrap the material.





If you want the inventory adjustment to show up on the company's financial reports, then select "Post to Inv and Scrap".

11

When the form is filled out as desired, click the "Create" button.

The screenshot displays the 'Remnant Inventory' interface. A modal dialog box titled 'Scrap/Adjust Remnant' is open, allowing for the creation of a new scrap entry. The dialog contains the following fields:

- Part:** A dropdown menu showing '1076 AR500 Plate Per Linear Foot, 3/8" Thick'.
- Quantity:** A text input field containing the value '5'.
- Source:** A dropdown menu showing '207-64 Outside Steel Remnant (Gravel Area) 1076'.
- Type:** A dropdown menu showing 'Post to Inv and Scrap'.
- Create:** An orange button at the bottom right of the dialog.

The background interface includes a 'Remnant Inventory' table with columns for Part, Description, and Location. A search bar is located at the top of the table. The bottom of the screen shows a navigation bar with tabs for 'Setup', 'Time', 'Material', and 'Staging'.