

Overview

The Material tab is used for:

1. Seeing where parts for the selected MO/Batch/Shop Job are located
 - a. Skids
 - b. Locations
2. Calling skids and sending skids away
3. Checking content records for skids in the area

Tab Layout

1. The Top Left section shows the list of skids where parts have been staged for the chosen MO/Batch/Shop Job
2. The Top Right Section of the tab is the PandD cells for the chosen *Work Cell*
3. The Bottom Left Table shows skid contents
4. The Bottom Right Table shows the location contents
5. Above the "Content Skids" window you can see the chosen MO/Batch/Shop Job

Shop Tracker

Schedule Setup Time **Material** Skids

Work Cell: p110 - Saw/Shear

Selected for Batch 3103 Show MO Materials Show PandD Materials

Content Skids

2106

1

COJ 2106 4232 3189

COJ 0-0-3 0-0-3 0-0-1 0-0-0 + 0-0-5 0-0-4 0-0-3 0-0-2 0-0-1 0-0-0 + 0-0-5 0-0-4 0-0-3 0-0-2 0-0-1 0-0-0

NDE 1330

NDE 0-0-0 0-0-1 0-0-2 0-0-3 0-0-4 0-0-5 0-0-6 0-0-7 0-0-8 0-0-9 0-0-10 0-0-11 0-0-12 0-0-13

Miscellaneous Stock

+ 2997 +

Saw Free Stock

+ +

Saw working area

+ +

2

Skid Contents for Batch 3103 View New Edit Show Skids Clear Selection Transfer Search

Skid ID	WIP Count	Part ID	Part Number	Description	PO Number	PO Item	Sequence	Comments	Cells
2106	0	28643	23028-3-cut	TOP	125765	1	2		COJ,0,0,3-3
2106	0	29707	9731-5-cut	1.5" ang	125690	1	1		COJ,0,0,3-3
2106	0	36377	23028-19-cut	ANGLE, TOP	125766	1	3		COJ,0,0,3-3

3

Location Contents for Batch 3103 View Search

WIP Count	Part Number	Description	Location ID	Location	Location Description
84	2860	Bar angle	130	Saw Free Stock	Bar stock storage for sa
52	9784	Structural angle	130	Saw Free Stock	Bar stock storage for sa

4

1. Click on the Operation/Job/Batch on the Schedule tab

- The PandD section will have a column on the far left that shows all of the skids needed for that job, you can scan the cells to see if any of those skids are already in your area, or you can call the skid to an open cell
- The parts needed from that skid can be seen in the Skid Contents table
- The parts needed from locations can be seen in the Location Contents table

Shop Tracker

Schedule Setup Time **Material** Staging

Work Cell: | p10 - Saw/Shear

Selected for Batch 3103 Show MO Materials Show Kitting Materials

Content Skids
⬇ ⬆ ⬇

2106

+

2106

4237

9199

9199

+

9-0-3

9-0-4

9-0-3

9-0-2

9-0-1

9-0-0

+

9-0-5

9-0-4

9-0-3

9-0-2

9-0-1

9-0-0

+

1538

+

9-0-0

9-0-1

9-0-2

9-0-3

9-0-4

9-0-5

9-0-6

9-0-7

9-0-8

9-0-9

9-0-10

9-0-11

9-0-12

9-0-13

Miscellaneous Stock

+

2957

+

Saw Free Stock

+

+

Saw working area

+

+

Skid Contents for Batch 3103 View ▾

New

Edit

Show Skids

Clear Selection

Transfer

Search

Skid ID ⬇ ⬆ ⬇	WIP Count ⬇ ⬆ ⬇	Part ID ⬇ ⬆ ⬇	Part Number ⬇ ⬆ ⬇	Description ⬇ ⬆ ⬇	PO Number ⬇ ⬆ ⬇	PO Item ⬇ ⬆ ⬇	Sequence ⬇ ⬆ ⬇	Comments ⬇ ⬆ ⬇	Cells ⬇ ⬆ ⬇
2106	0	28643	23028-3-cl	ANGLE TOP 1	125766	1	2		C0,0.0.3-3
2106	0	29707	9731-5-cut	1.5" ang	125690	1	1		C0,0.0.3-3
2106	0	36377	23028-19-cut	ANGLE TOP 1	125766	1	3		C0,0.0.3-3

Location Contents for Batch 3103 View ▾

Search

WIP Count ⬇ ⬆ ⬇	Part Number ⬇ ⬆ ⬇	Description ⬇ ⬆ ⬇	Location ID ⬇ ⬆ ⬇	Location ⬇ ⬆ ⬇	Location Description ⬇ ⬆ ⬇
84	2860		130	Saw Free Stock	Bar stock storage for s
52	9784	Structural angle	130	Saw Free Stock	Bar stock storage for s

Call an MO/Batch Skid to your area

- If the skid where your materials is located is not in your area you can call the skid to an open cell in your area
- Highlight the skid in the "Content Skids" area

Selected for Batch 3103

Show MO Materials

Show Kitting Materials

Content Skids

2106

C0j	2106	4237	3199		C0k
+	0-0-3	0-0-2	0-0-1	0-0-0	+
N0e	1538				
+	0-0-0	0-0-1	0-0-2	0-0-3	0-0-4

Miscellaneous Stock

+

2957

+

Saw Free Stock

+

Saw working area

+

c. Select the cell that you want the skid to be sent to

Selected for Batch 3103

Show MO Materials

Show Kitting Materials

Content Skids
⬆ ⬇ ⬅

2106

C0j	2106 0-0-3	4237 0-0-2	3199 0-0-1	<div></div> 0-0-0	C0k
+					+

N0e

1538 0-0-0				
+				

Miscellaneous Stock

+	2957	+
---	------	---

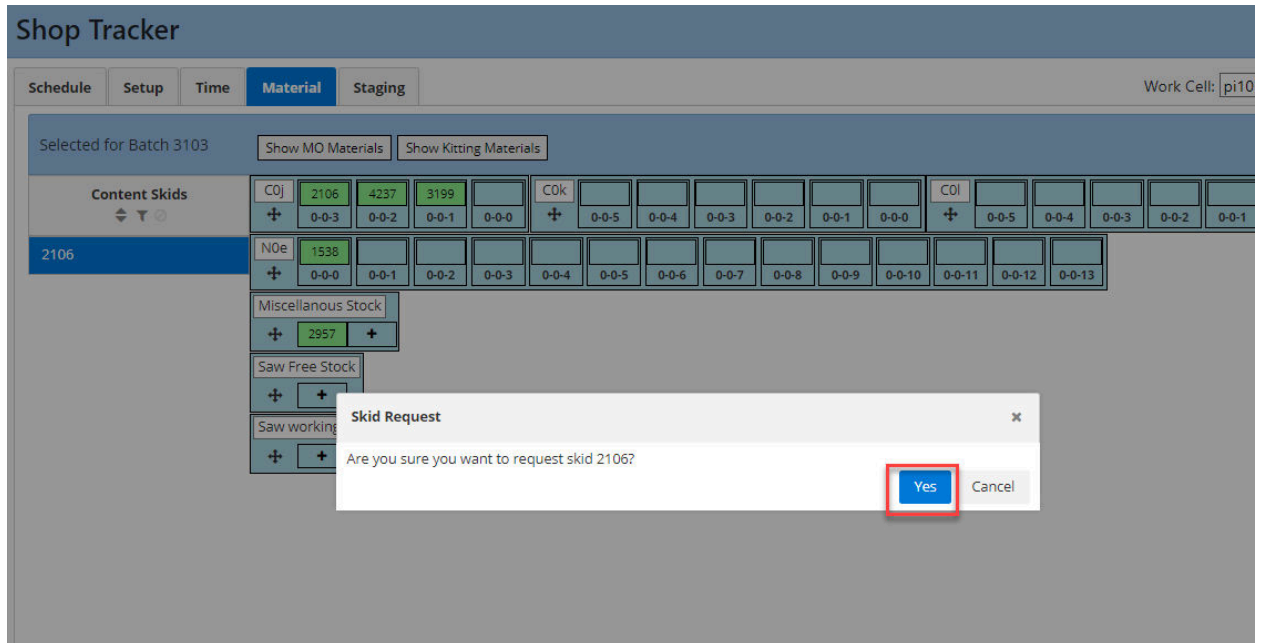
Saw Free Stock

+	+
---	---

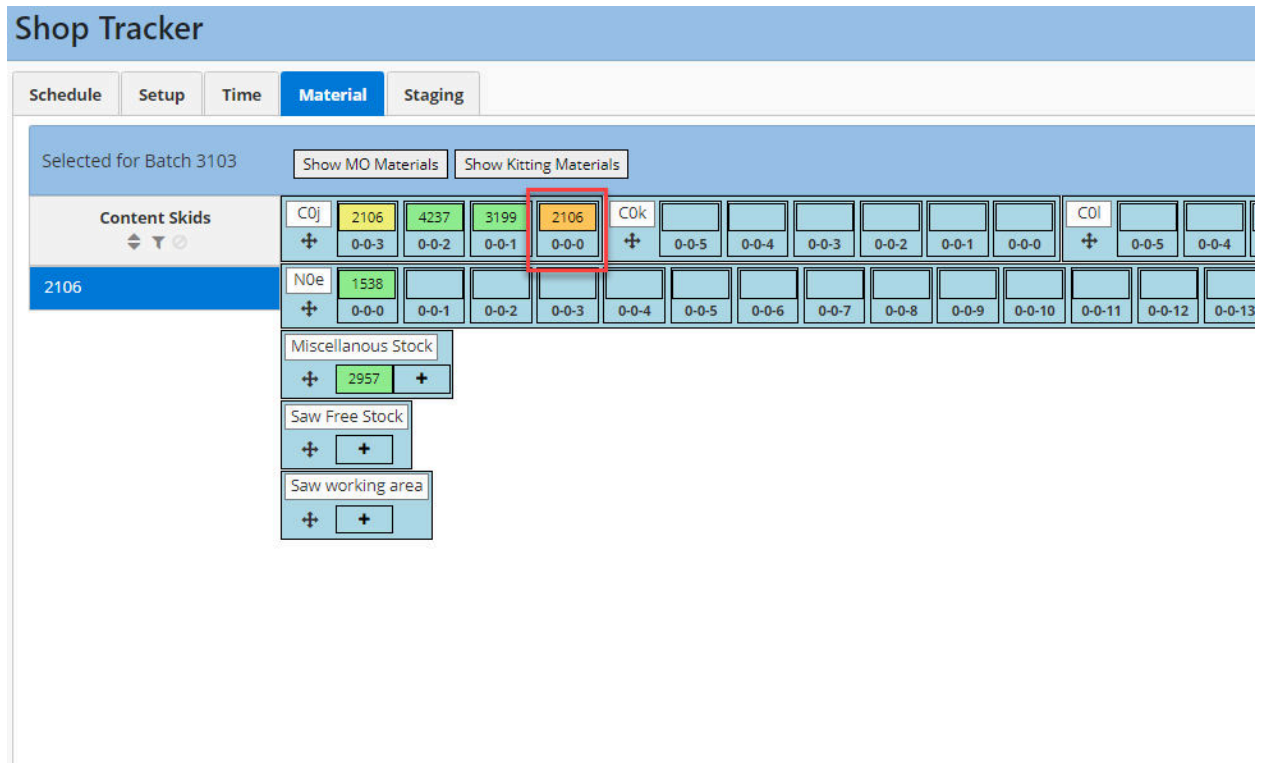
Saw working area

+	+
---	---

- d. The prompt will ask you if you want to request the skid.



- e. The open cell will highlight orange to indicate that the skid has been called



Call a non-MO/Batch Skid to your area

- You can call a skid to your area in the Material Tab
- In the "Skid Contents" window click on "Show Skids"

Skid Contents										Location Contents	
View ▾											
New Edit Show Skids Clear Selection Transfer Search											
Skid ID	WIP Count	Part ID	Part Number	Description	PO Number	PO Item	Sequence	Comments	Cells	WIP Count	Part Number
2106	0	36377	23028-19	ANGLE, T	125766	1	3		C0j,0,0,3-	84	286
2106	0	28643	23028-3-	ANGLE, T	125766	1	2		C0j,0,0,3-	52	978
2106	0	29707	9731-5-c	1.5" x 1.5	125690	1	1		C0j,0,0,3-		

Work Materials									
View ▾									
Refresh Undeliver Show All									
Part									

- This will hide the "Location Contents" table and show the Skids

Skid Contents									
View ▾									
New Edit Show Loc Clear Selection Transfer Search									
Skid ID	WIP Count	Part ID	Part Number	Description	PO Number	PO Item	Sequence	Comments	Cells
2106	0	36377	23028-19	ANGLE, T	125766	1	3		C0j,0,0,3-
2106	0	28643	23028-3-	ANGLE, T	125766	1	2		C0j,0,0,3-
2106	0	29707	9731-5-c	1.5" x 1.5	125690	1	1		C0j,0,0,3-

Skids				
Edit				
Search: Skid Comment Use Access Search				
Skid ID	Use	Comments	Cells	Access
No data loaded				
1				

- In the "Skids" table use the filters to search for the skid that you want to call.
 - If you know the Skid # you can enter that into the Skid field

Skids Edit

Search: Skid Comment Use Access ✖ Search

Skid ID	Use	Comments	Cells	Access
No data loaded				

1

b. You can search for the Comment

Skids Edit

Search: Skid Comment Use Access ✖ Search

Skid ID	Use	Comments	Cells	Access
No data loaded				

1

c. You can search for Use

Skids Edit

Search: Skid Comment Use Access ✖ Search

Skid ID	Use	Comments	Cells	Access
No data loaded				

1

emp

wip
inv
per
pro
emp
voi
tol

d. You can search by Access

Skids Edit

Search: Skid Comment Use Access × Search

Skid ID	Use	Comments	Cells	Access
No data loaded				

1

e. Or you can search by any combination of those 4. In the below example the search was for skid 1302 that has a Use of emp

Skids Edit

Search: Skid Comment Use Access × Search

Skid ID	Use	Comments	Cells	Access
1302	emp			

1

f. Once the skid is found, you can then call the skid by selecting it

Skids Edit

Search: Skid Comment Use Access × Search

Skid ID	Use	Comments	Cells	Access
1302	emp			

1

- g. If the skid is empty and not in a cell you can simply click on an empty cell and it will be placed in the cell

The image displays two screenshots of the 'Shop Tracker' software interface, illustrating the process of placing a skid into a cell. The interface includes tabs for 'Schedule', 'Setup', 'Time', 'Material', and 'Staging'. The 'Material' tab is active, showing a grid of cells for 'Batch 3103'. A red arrow points from an empty cell in the first screenshot to the same cell in the second screenshot, where it now contains a skid. The skid is labeled '2106' and is associated with 'Content Skids'. Below the grid, there is a 'Skid Contents' table with columns for Skid ID, WIP Count, Part ID, Part Number, Description, and PO Number. The table shows three rows of data for skid 2106.

Skid ID	WIP Count	Part ID	Part Number	Description	PO Number
2106	0	36377	23028-19-	ANGLE, TC	125766
2106	0	28643	23028-3-cl	ANGLE, TC	125766
2106	0	29707	9731-5-cl	1.5" x 1.5"	125690

- h. If the skid is in a cell it will initiate a Lift Truck request