

Transferring Remnant Material

1 Open the Action Target Enterprise Portal.

This test environment settings are related to the testing environment.

Employee Directory

Status

Message Center

Browser Support

Employee Name

Employee Name

Phone Number

Actions

Data Warehouse

Email / Office 365

ERP Legacy Apps

ERP Web Apps

Internet

Preferred: Microsoft Edge

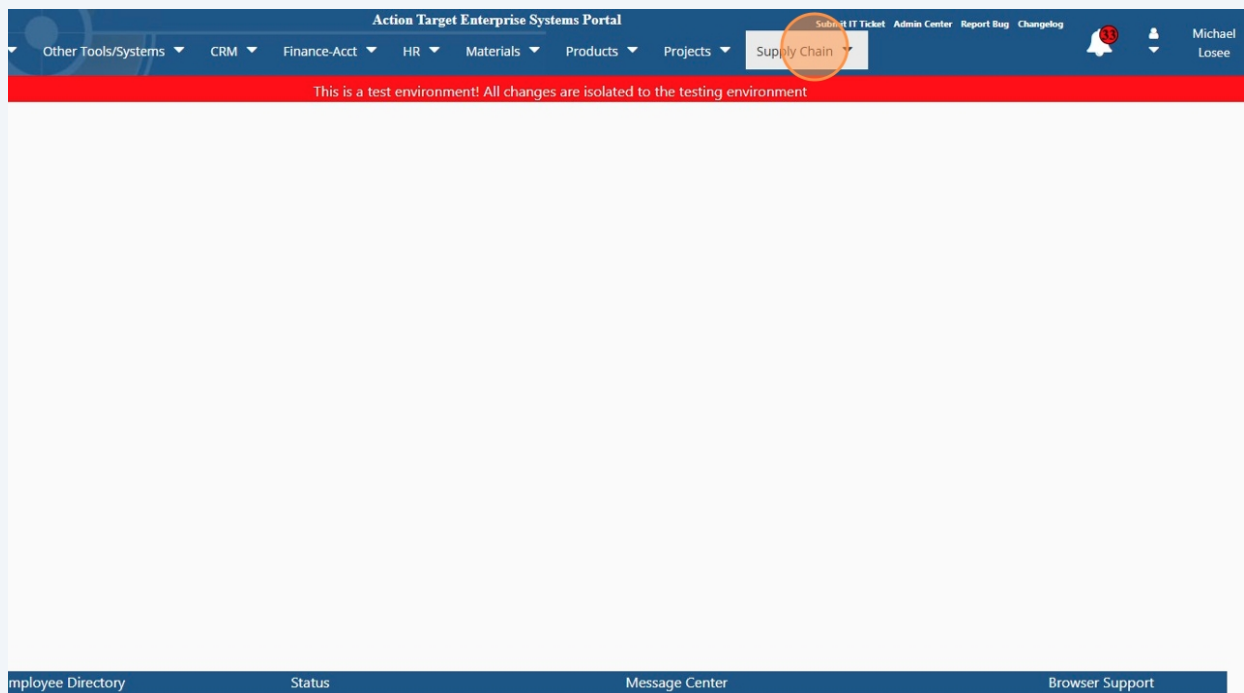
Supported: Mozilla Firefox 4+, Google Chrome

Limited: Microsoft Internet Explorer 9

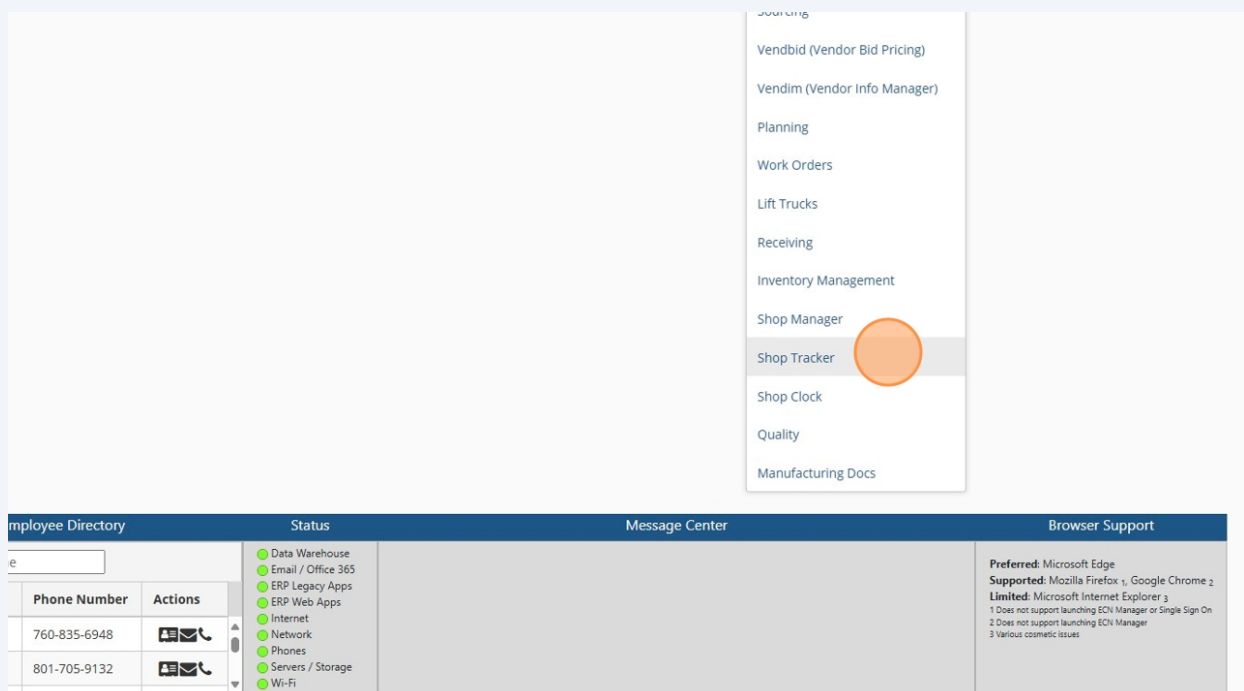
1 Does not support launching ECN Manager or Single

2 Does not support launching ECN Manager

2 Click on the "Supply Chain" menu located near the top of the portal.



3 Click on the "Shop Tracker" option from the drop-down menu.



4 Click on the "Material" tab located near the top of the tool.

Action Target Enterprise Systems Portal

Legacy ERP Other Tools/Systems CRM Finance-Acct HR Materials Products Projects Supply Chain

Submit IT Ticket Admin Center Report Bug Characterization

This is a test environment! All changes are isolated to the testing environment

Shop Tracker

Schedule Setup Time **Material** Staging

Work Cell: pi

Schedule

Show Batches Show Logs Show Tables

Schedule Search Operator Actions Check In Check Out Documents Fulfill EHR Labels Add Destination Close Job QC Refresh Default History Clear Selection

Search: Queued Kitting **Staged** In-Process Parts in Batch Work Order

Priority	WO ID	MTR	Req Qnt	Part Number	Description	Operation	WO Notes	Start	Status	Batch ID	Mat Available	Next Op Name	WO Due
5		jb-1055-1	1	49135	(Phase-Out - R	elec-assemb	Inspect Repc	2025-03-07	staged		true		
6	58793	mo-170452	4	33785	-REDLINE- Aut	elec-assemb	Indonesia 2C	2025-03-27	in-process	14637	false		2025-05-12
6	58794	mo-170454	4	33785	-REDLINE- Aut	elec-assemb	Indonesia 2C	2025-03-27	in-process	14637	false		2025-05-12
6	58695	mo-170270	15	33785	-REDLINE- Aut	elec-assemb	Indonesia 2C	2025-03-27	in-process	14636	true		2025-04-28
6	58697	mo-170276	4	33785	-REDLINE- Aut	elec-assemb	Indonesia 2C	2025-03-27	in-process	14636	false		2025-04-28
6	59693	mo-172023	1	33785	-REDLINE- Aut	elec-assemb	WAR Ord 15	2025-03-27	in-process	14637	true		2025-05-19
6	58899	mo-170628	15	33785	-REDLINE- Aut	elec-assemb	Israel-IMI 15	2025-03-27	in-process	14637	false		2025-05-16
6	58702	mo-170286	16	33785	-REDLINE- Aut	elec-assemb	Indonesia 2C	2025-03-27	in-process	14636	false		2025-05-12

5 Click on the "Remnant" button located in the PandD window header.

Action Target Enterprise Systems Portal

Legacy ERP Other Tools/Systems CRM Finance-Acct HR Materials Products Projects Supply Chain

Submit IT Ticket Admin Center Report Bug Characterization

This is a test environment! All changes are isolated to the testing environment

Shop Tracker

Schedule Setup Time **Material** Staging

Work Cell: pi

Select an MO in Main Tab Check Out **Remnant**

Content Skids

No data loaded

MO	Part Number	Req Qnt	Part Number	Req Qnt	Part Number	Req Qnt	Part Number	Req Qnt
A0a	1695	0-0-3	3243	0-0-2	0-0-1	0-0-0		
A0d		0-1-2		0-1-1		0-1-0		
A0f		0-0-1		0-0-0				
A0g	1557	0-1-2	4641	0-1-1	0-1-0			
	1032	0-0-2		0-0-1	0-0-0			
A1e	3125	0-1-0	4529	0-1-1	1516	0-1-2	1348	2023
		0-0-0		0-0-1		0-0-2	1-1-0	1-1-1
							1-1-1	1-1-2
							1-0-0	1-0-1
							1-0-1	1-0-2
B1c	2433	0-1-0	1484	0-1-1	4620	0-1-2	3175	4046
		0-0-0		0-0-1		0-0-2	1-1-0	1-1-1
							1-1-1	1-1-2
							1-0-0	1-0-1
							1-0-1	1-0-2
M0c		0-0-0	4511	0-0-1	4311	0-0-2	4529	3125
							0-0-3	0-0-4
							0-0-5	0-0-6
							0-0-7	0-0-8
M1c		0-0-4		0-0-3	4163	0-0-2	4242	0-0-1
							0-0-0	

119 - Electronics Flammables Cabinet

6 Click "Transfer" from the new window.

The screenshot shows the Action Target Enterprise Systems Portal. A red banner at the top states: "This is a test environment! All changes are isolated to the testing environment." Below this, the "Shop Tracker" interface is visible. A "Remnant Inventory" window is open, displaying a table of inventory data. The "Transfer" button is highlighted with an orange circle. A search bar is also visible within the window.

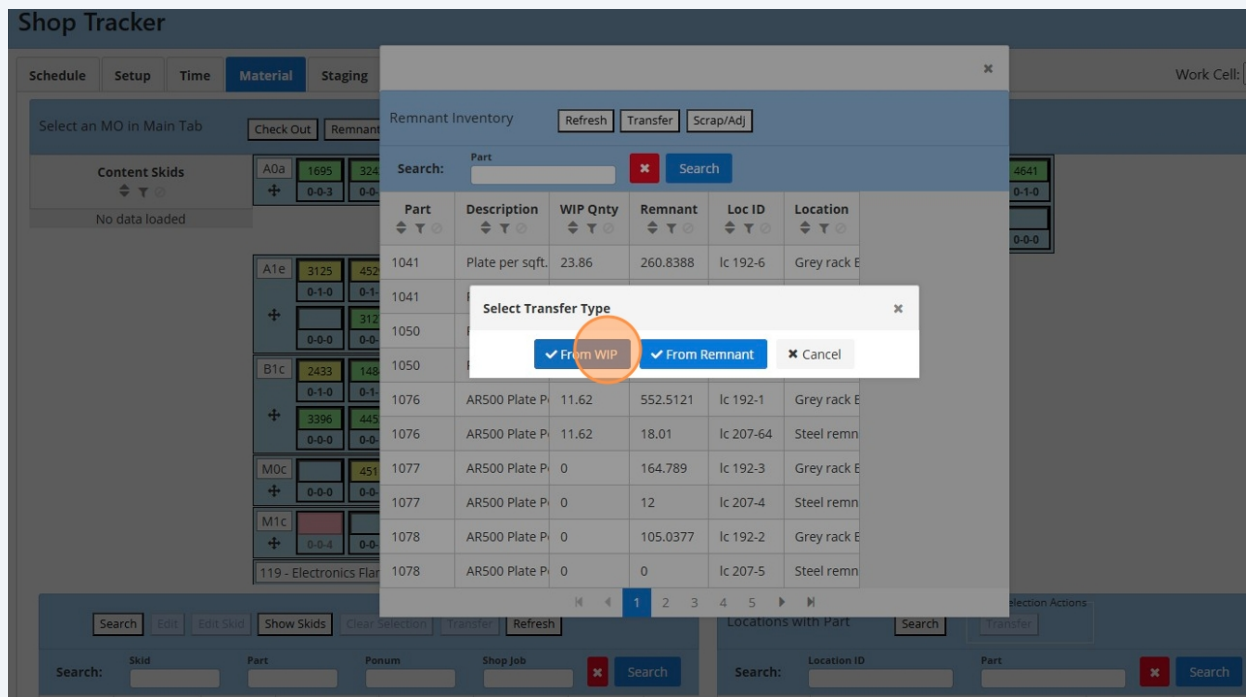
Part	Description	WIP Qty	Remnant	Loc ID	Location
1041	Plate per sqft.	23.86	260.8388	Ic 192-6	Grey rack E
1041	Plate per sqft.	23.86	0	Ic 207-71	Steel remn
1050	Plate per sqft.	155.6	963.7454	Ic 192-5	Grey rack E
1050	Plate per sqft.	155.6	3.67	Ic 207-2	Steel remn
1076	AR500 Plate P	11.62	552.5121	Ic 192-1	Grey rack E
1076	AR500 Plate P	11.62	18.01	Ic 207-64	Steel remn
1077	AR500 Plate P	0	164.789	Ic 192-3	Grey rack E
1077	AR500 Plate P	0	12	Ic 207-4	Steel remn
1078	AR500 Plate P	0	105.0377	Ic 192-2	Grey rack E
1078	AR500 Plate P	0	0	Ic 207-5	Steel remn

7 From the new pop-up window, you can transfer material from WIP to Remnant or vice versa. **In this document we will transfer material from WIP to Remnant.**

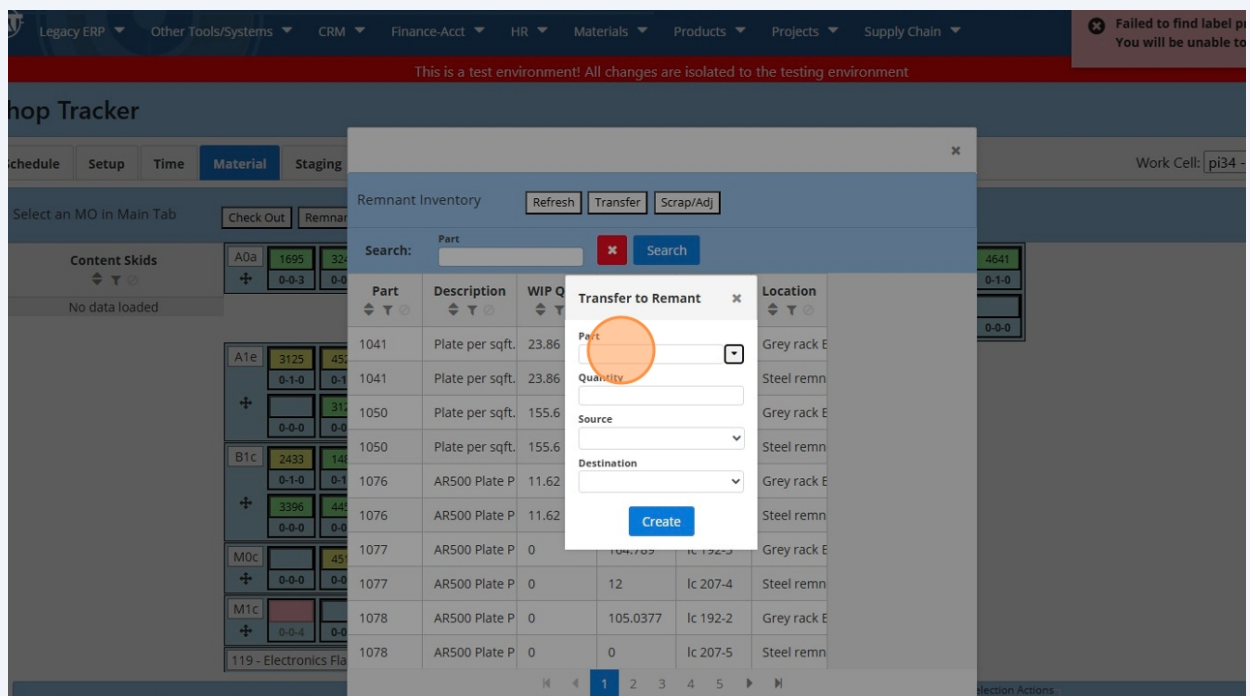
The screenshot shows the same "Remnant Inventory" window as in the previous image. A "Select Transfer Type" dialog box is open, allowing the user to choose between "From WIP" and "From Remnant". The "From WIP" option is selected. The background window remains visible, showing the inventory table.

Part	Description	WIP Qty	Remnant	Loc ID	Location
1041	Plate per sqft.	23.86	260.8388	Ic 192-6	Grey rack E
1041	Plate per sqft.	23.86	0	Ic 207-71	Steel remn
1050	Plate per sqft.	155.6	963.7454	Ic 192-5	Grey rack E
1050	Plate per sqft.	155.6	3.67	Ic 207-2	Steel remn
1076	AR500 Plate P	11.62	552.5121	Ic 192-1	Grey rack E
1076	AR500 Plate P	11.62	18.01	Ic 207-64	Steel remn
1077	AR500 Plate P	0	164.789	Ic 192-3	Grey rack E
1077	AR500 Plate P	0	12	Ic 207-4	Steel remn
1078	AR500 Plate P	0	105.0377	Ic 192-2	Grey rack E
1078	AR500 Plate P	0	0	Ic 207-5	Steel remn

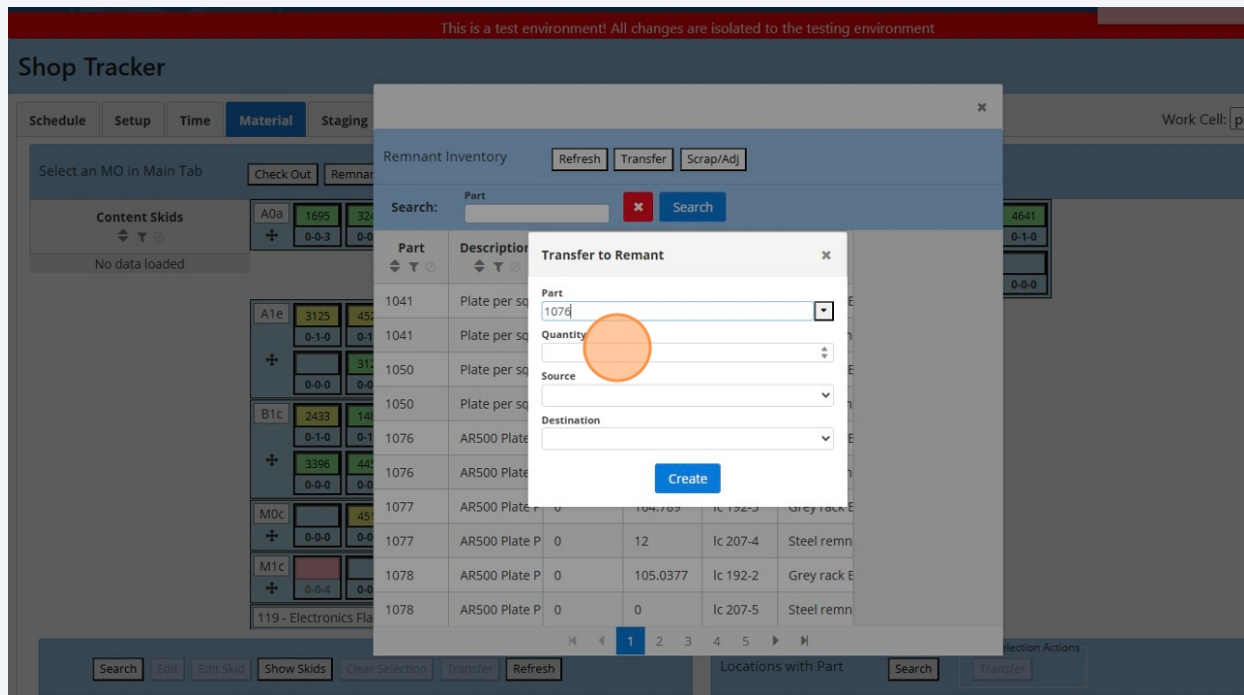
8 Click on the "From WIP" button.



9 Input your desired part number.

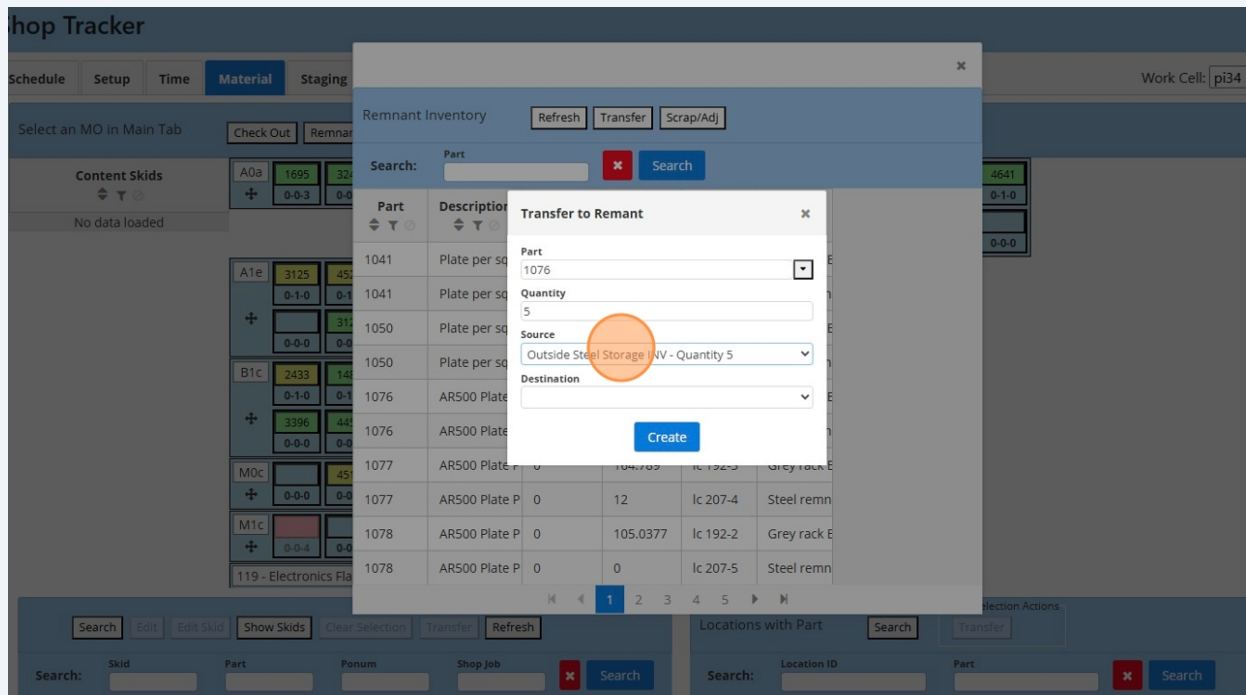


10 Input your desired quantity that needs to be transferred.

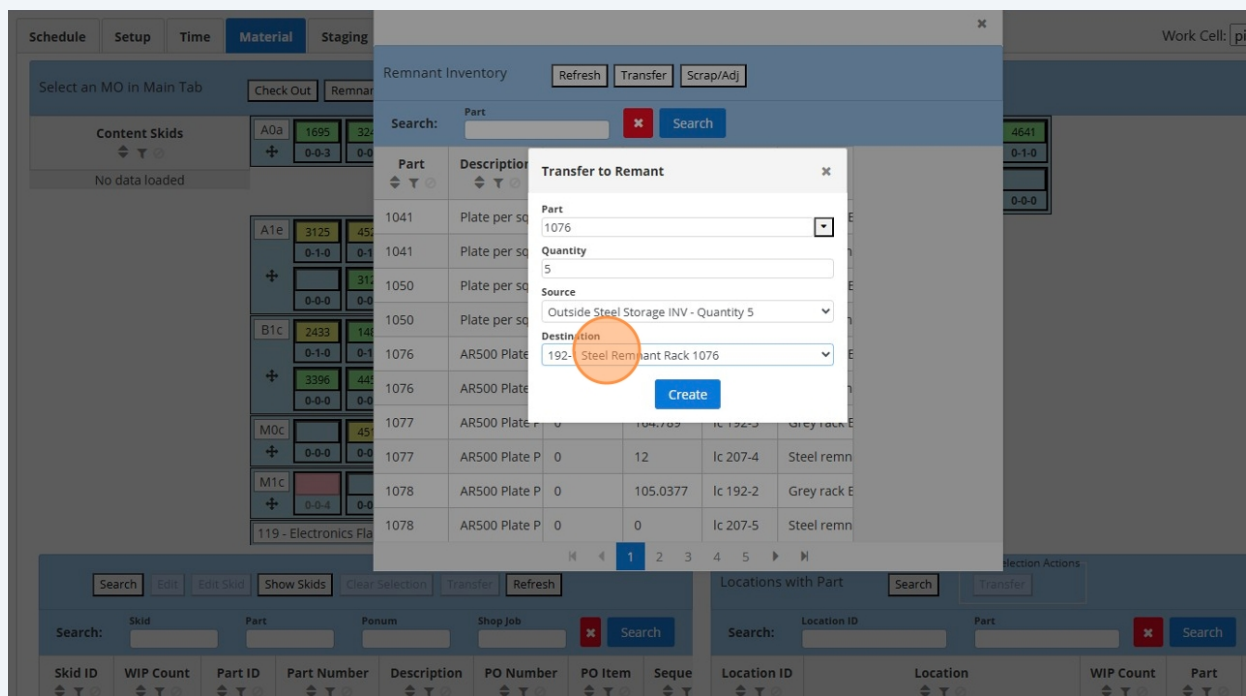


Make sure your location has a sufficient quantity to transfer, otherwise you will get an error.

- 11 Select your desired location where the part is being transferred from.



- 12 Select your desired location where the part is being transferred to.



13

